



SURFACE Guidelines

Results dissemination

Mikael Lindgren, RISE, Sweden



Pre-normative guidelines for measurement methods and procedures

- spectral properties
- effects of measurement uncertainty in tolerance calculations
- obtrusive light
- light pollution of road lighting installations

In preparation now – to be made available through participation in CIE TC4-50 work.



Pre-normative guidelines for photometric characterisation of road and pavement surfaces

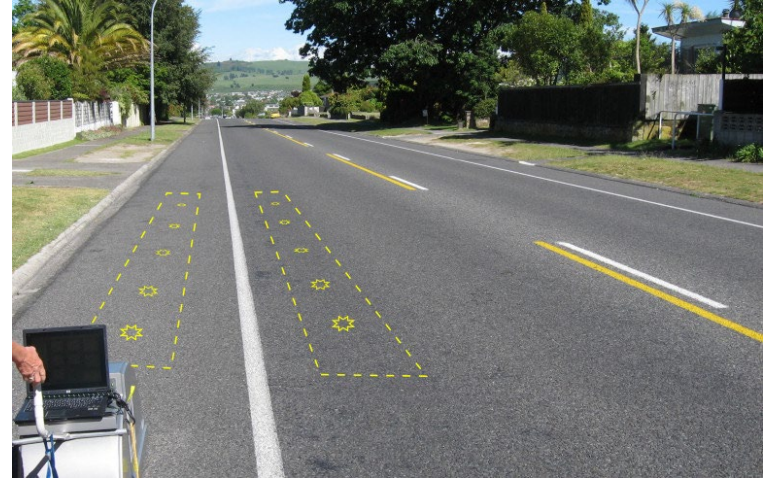
- aging of road surfaces
- wet conditions
- mesopic visual conditions
- adaptive lighting systems (smart lighting)

In preparation now – to be made available through participation in CIE TC4-50 work.

Pre-normative guidelines



Sample extraction



Pre-normative guidelines

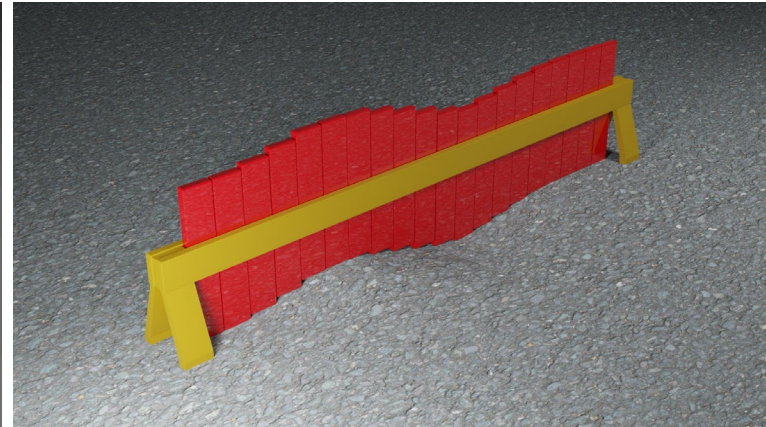
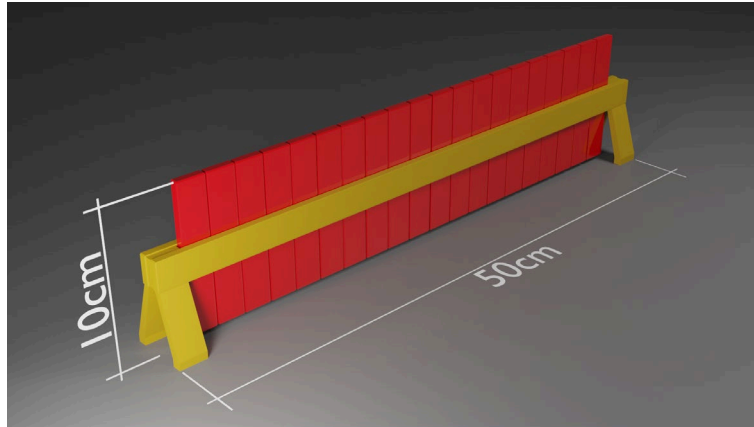
Sample information



Pre-normative guidelines



Sample site information

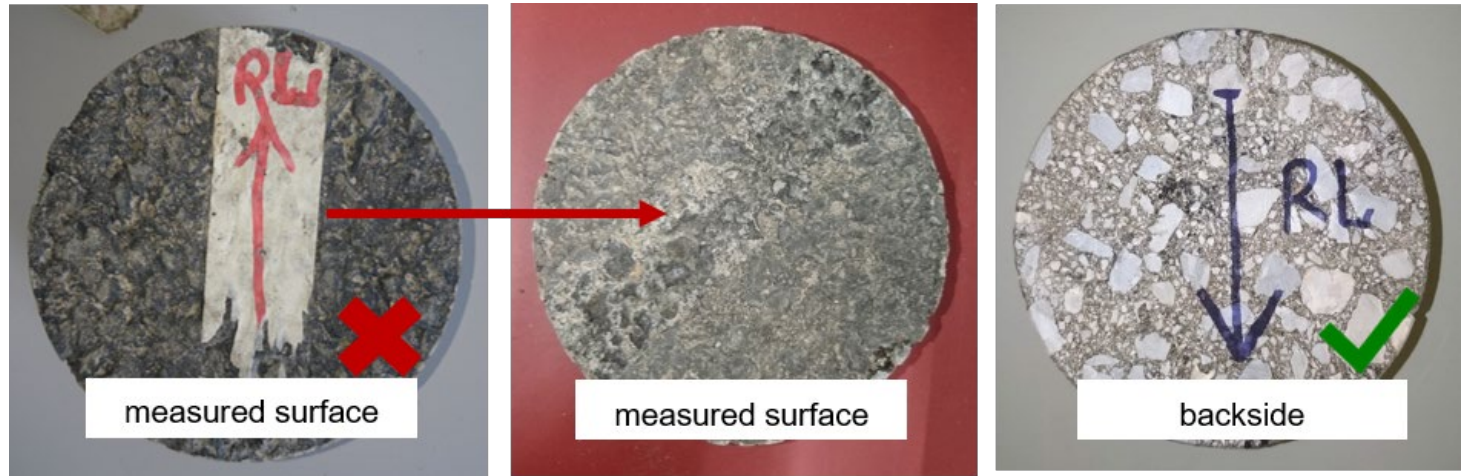


Contour gauge



Pre-normative guidelines

Sample marking and storage



SURFACE 4th Webinar

End of January 2021

- Uncertainty of luminance coefficient: impact and tools for evaluation
- intercomparison on luminance coefficient and reference materials

See you next year
TC4-50 meeting to follow